

NAGA 2 ROV SYSTEM

Subsea Robotics Services owns and operates 2 units of the Naga 40HP ROV System.

It is a very versatile and capable light work class ROV system that is able to operate in depths of 1,000 meters. It can also be configured with a Garage system.

The Naga is suitable for many types of projects including pipeline inspection, pipelay support, drill rig support, platforms inspection/cleaning and construction support.



CONSTRUCTION

- MULTIPLE ELECTRONIC PRESSURE VESSELS
- ALUMINIUM ALLOY WELDED BEAM FRAME
- BUOYANCY MATERIAL

POWER PACK.....40HP

PERFORMANCE

FORWARD > 2.5 knots 110kgf (242lbf)

VERTICAL > 1.5 knots 77kgf (170lbf)

LATERAL > 2 knots 73kgf (161lbf)

ALL VEHICLE SPEED +(-) 10%, BASED ON BARE VEHICLE

PROPULSION

2 AXIAL THRUSTERS/1 VERTICAL THRUSTERS/

1 LATERAL THRUSTERS

MANIPULATOR/TOOLS (OPTIONAL)

- 1 X 7 FUNCTION JOYSTICK CONTROLLED KRAFT MANIPULATOR WITH PARALLEL JAWS

SPECIFICATIONS: 40HP

LENGTH2,006mm (6.5 feet)

WIDTH 1,130mm (3.7 feet)

HEIGHT 1,479mm (4.9 feet)

WEIGHT 1,200 kg Nominal

PAYLOAD 60 kg (132lbs)

DEPTH RATING ...1,000m (3,280 feet)

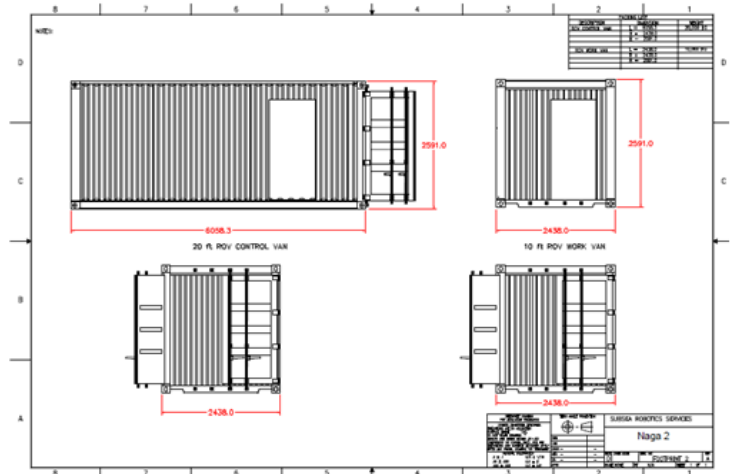
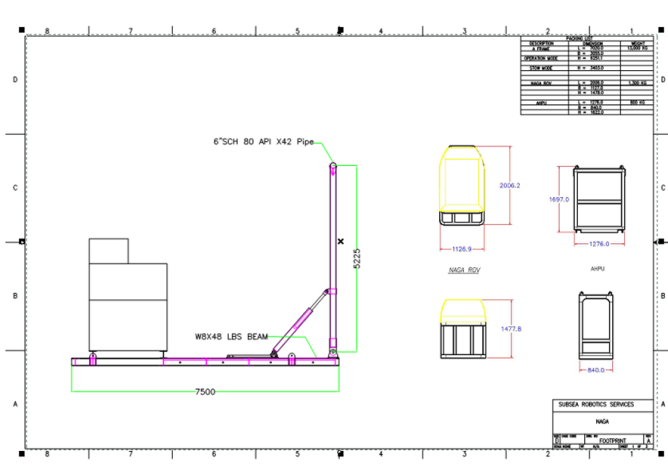
SPARE HYDRAULIC CONTROL

- 1 SERVO CONTROL (BI-DIRECTIONAL) WITH PRE-WIRE TO THE PILOT'S CONTROL CONSOLE

AUTO FUNCTIONS: HEADING/ DEPTH/ ALTITUDE

VIDEO, LIGHTS AND PINGER

- SILICON INTENSIFIED TARGET (SIT), MONO-CHROME VIDEO CAMERA
- COLOR CCD VIDEO CAMERA (INSPECTION USE)
- 5 X 250W LIGHTS, FLOOD OR SPOT, DIMMABLE



NAGA 2 ROV SYSTEM

SONAR

TYPE SEAKING SONAR HEAD
RANGE 1—300m SELECTABLE
RANGE RESOLUTION 5 - 400m DEPENDING ON RANGE
SECTOR OR 360° SCAN SELECTABLE
SCAN RATE SELECTABLE
ROTARY CONTROLS

PAN AND TILT

TYPE 1 UNITS, HYDRAULIC, FRONT MOUNTED
RANGE ± 80 DEGREES TILT
± 180 DEGREES PAN

CONTROL CONSOLE

- 4 X 10" Color Monitor/1 X 17" LCD Monitor (Navi)
- 1 X 15" Pilot Monitor/1 X 15" Co-Pilot Monitor
- 1 X 17" LCD Monitor (SONAR DISPLAY)
- JOYSTICK CONTROL FOR VEHICLE
- MANIPULATOR CONTROLLERS
- VIDEO TEXT/GRAPHIC OVERLAY
- 2 X DVD RECORDERS
- 8 CHANNEL VIDEO SWITCHER

PILOT'S CONTROL SHELF

CONTAINS AEROSPACE TYPE JOYSTICK WITH ROV MOTION CONTROL THUMB SWITCHES. ALSO INCLUDE ON/OFF SWITCHES, POTS OR PUSH BUTTONS FOR: HPU, INSTRUMENTATION POWER, CAMERA CONTROLS ON/OFF AND FOCUS, VIDEO ANNOTATION ON/OFF, GYRO ON/OFF, VEHICLE AND ALTITUDE SONAR ON/OFF, SWITCHES FOR HYDRAULIC MANIFOLD SOLENOIDS, MAIN JOYSTICK FORWARD/REVERSE, GRAPHICS PAGE SELECT, JOYSTICK SENSITIVITY, LIGHT CONTROLS, ROV TRIM POTS, ADDITIONAL PAN AND TILT JOYSTICK, AUTO DEPTH, AUTO ALTITUDE AND AUTO HEADING.

CLIENT REPRESENTATIVE VIEW AREA

THE CONTROL VAN CAN BE FITTED WITH A DEDICATED VIEWING AREA FOR THE CLIENT TO MONITOR ALL ROV OPERATIONS SUBSEA. IT WILL INCLUDE A 14 INCH COLOR MONITOR WITH OUTPUTS FROM THE CONTROL CONSOLE'S VIDEO SWITCHING UNIT.

POWER DISTRIBUTION

- POWER DISTRIBUTION PANEL
- GROUND FAULT MONITORING AND PROTECTION SYSTEM
- SURFACE TRANSFORMERS
- OVERLOAD, UNDERVOLTAGE PROTECTION AND PHASE LINE MONITORING
- GFI/GFD—MONITORS MOUNTED ON PDU

ADDITIONAL TOOLING AVAILABLE ON REQUEST

TETHER

- LENGTH 800m (2,640 feet)
- BREAKING STRENGTH..... 170 KN
- STRENGTH MEMBER..... BRAIDED KEVLAR
- WEIGHT IN WATER..... NEUTRALLY BUOYANT
- NO. OF CONDUCTORS...16 (4 Quads & Coax ea)

LARS

- A-Frame Boom
- Weight (C/W Winch)..... 13,000 KG
- DIMENSIONS..... 7.50m L x 3.21m W x 2.18m H

MAIN WINCH

- CAPABLE OF STORAGING 1,500m OF UMBILICAL
- ELECTRO-HYDRAULIC OPERATION
- PURGEABLE SLIP RINGS, FAIL SAFE BRAKES
- DIMENSIONS.... 2.75m L x 2.44m W x 1.54m H

CONTROL VAN

DIMENSIONS..... 6.06m L x 2.44m W x 2.59m H
WEIGHT 10,000 KG (22,000 lbs)

WORK VAN

DIMENSIONS..... 2.44m L x 2.44m W x 2.59m H
WEIGHT 5,000 KG (11,000 lbs)

SUBSEA ROBOTICS SERVICES PTE LTD

LOYANG CRESCENT, BLK302 TOPS AVE 3, #02-07 LOYANG OFFSHORE SUPPLY BASE, SINGAPORE 508988

EMAIL: enquiry@subsearobotics.com.sg TELEPHONE: 65 6214 0315 FAX: 65 6214 0316